

Made in  
Japan

Konayuki

粉雪

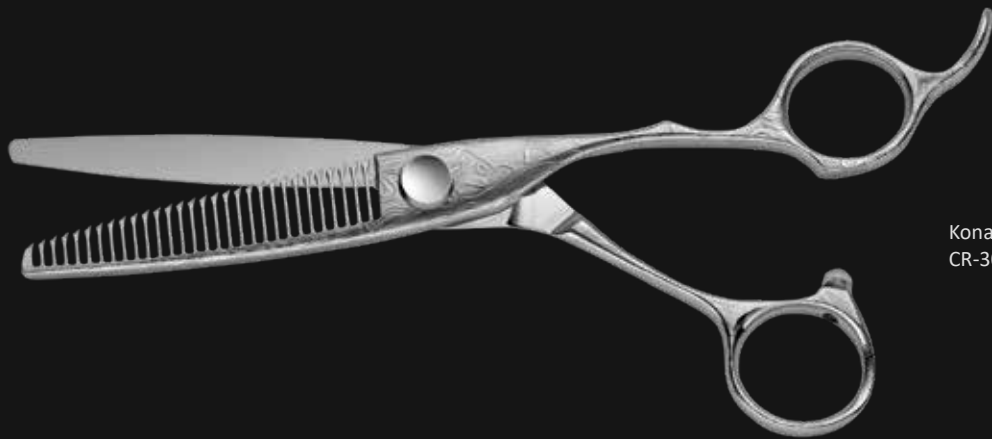


# Konayuki 粉雪

## Damascus Series



Konayuki  
CR-575



Konayuki  
CR-303RS

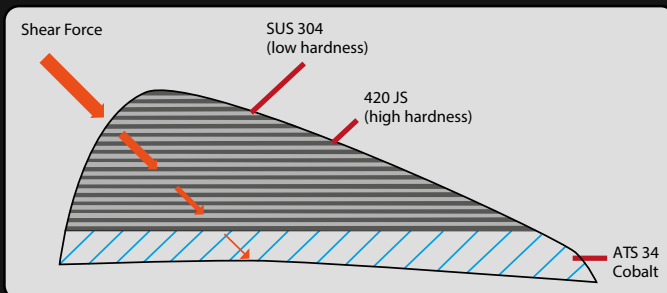
The ultimate Cutting – Experience !

- 100% Japan – style handmade from 3 different materials in original „Sekiso – technique“
- Unique laminated “soft-hard” material structure (420 J2 & SU S304 Japan steel) of cutting blade backside (see graphic) stands for perfect absorption of cutting vibrations = so far nearly unachieved perfect smooth cutting feeling
- Cutting blade inner side made of ultra-resistant ATS304 Cobalt alloy stands for perfect cutting power and long lifetime
- Each model comes in unique individual texture

Available Models:

Art. No. 1111 Cutting scissors CR 575 / 5.75“

Art. No. 1112 Thinning scissors CR 303 RS / 6.0“/ 30 teeth



# Konayuki 粉雪

## Hosomi Series



YK 55



YK 60

- Handmade in Japan
- Made of Hitachi ATS314 stainless steel, Co-developed by Hitachi Metals especially for Hairscissors (contains Molybdenum, Vanadium and Cobalt)
- Original Hamaguri Cutting Edge
- Ergonomic design, extremely slim & narrow blade  
Extreme lightweight ( 5,5" = 45gr.)

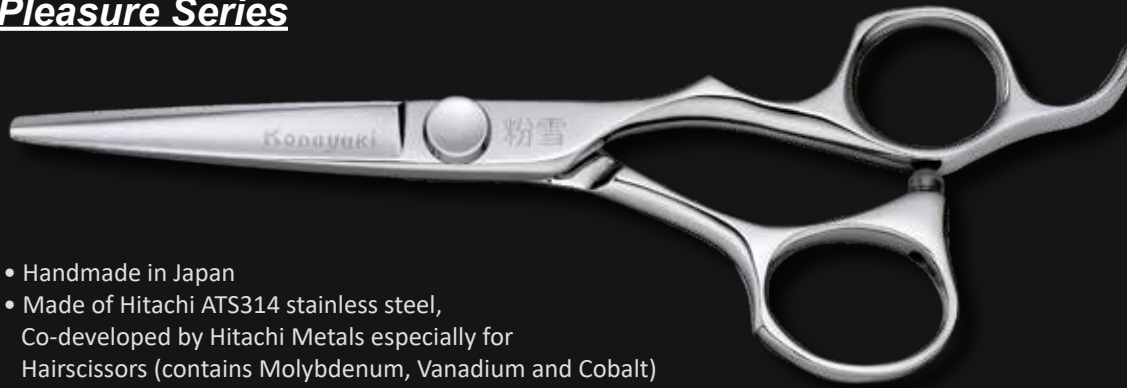
### Available Models:

Art. Nr. 1118 YK 55 / Hosomi Series YK 55, 5.5"

Art. Nr. 1119 YK 60 / Hosomi Series YK 60, 6.0"

# Konayuki 粉雪

## Pleasure Series



- Handmade in Japan
- Made of Hitachi ATS314 stainless steel, Co-developed by Hitachi Metals especially for Hairscissors (contains Molybdenum, Vanadium and Cobalt)
- For extreme high durability and smooth cutting.
- Ergonomic design
- Convex Blades

Available Models:

Art. Nr. 1100 YM 55 / Pleasure Series YM Convex 55, 5.5"

Art. Nr. 1101 YM 60 / Pleasure Series YM Convex 60, 6.0"

## Pleasure Series Modellierschere



- Handmade in Japan
- Made of Hitachi ATS314 stainless steel, Co-developed by Hitachi Metals especially for Hairscissors (contains Molybdenum, Vanadium and Cobalt)
- Cutting ratio 15% - 25% can be changed by cutting degree
- Very soft cutting feeling as only hair in grooves is cut- no damage by comb edge

Available Models:

Art. No. 1102 RS303 /Pleasure Series Slender 303RS Effi, 6.0" / 30 teeth

# Konayuki 粉雪

## Light Classic Series



Lefthand

- Handmade in Japan
- Made of Hitachi SUS440C, high carbon stainless steel (contains Carbon and Chrome)
- Very sharp edge & smooth cut
- Ergonomic design
- Convex blade

Available Models:

Art. No. 1103 NY 55 / Light Classic Series 5.5"

Art. No. 1104 NY 60 / Light Classic Series 6.0"

Art. No. 1105 NYL 55 / Light Classic Series Lefthand 5.5"

Art. No. 1106 NYL 60 / Light Classic Series Lefthand 6.0"

## Light Classic Series Modellierschere



- Handmade in Japan
- Made of Hitachi SUS440C, high carbon stainless steel (contains Carbon and Chrome)
- Classic Design
- Cutting Ratio 35% - 40%

Available Models:

Art. No. 1107 NYM 55 / Light Classic Series regular Thinner, 5.5" / 40 teeth

# Konayuki 粉雪

## Chiko Series



CS 60

- Handmade in Japan
- Made of Hitachi ATS314 stainless steel, Co-developed by Hitachi Metals especially for Hairscissors (contains Molybdenum, Vanadium and Cobalt)
- For extreme high durability and smooth cutting
- Ergonomic design
- Convex blade

### Thining scissor:

- 14 teeth with 7 micro teeth each
- Cutting ratio 35% - 40%
- Big handle rings, designed for European hands



CS 147D

### Available Models:

Art. Nr. 1114 CS 55 / Chiko Series Convex 55, 5.5"

Art. Nr. 1115 CS 60 / Chiko Series Convex 60, 6.0"

Art. Nr. 1116 CS 147D / Chiko Series Effi, 6.0" / 14 teeth

## Power Series



- Handmade in Japan
- Made of Hitachi ATS314 stainless steel, Co-developed by Hitachi Metals especially for Hairscissors (contains Molybdenum, Vanadium and Cobalt)
- For extreme high durability and smooth cutting
- Ergonomic design – extra strong blade designed for barbercuts

### Available Models:

Art. Nr. 1108 YSB 70 / Power Series 7.0"

# Konayuki 粉雪

## Rapid Series



- Handmade in Japan
- Made of Hitachi SUS440C, high carbon stainless steel (contains Carbon and Chrome)
- Very sharp edge & smooth cut
- New Ergonomic design – fixed Fingerrest
- Convex blade

Available Models:

Art. Nr. 1109 YTK 55 / Rapid Series, 5.5"

Art. Nr. 1110 YTK 60 / Rapid Series, 6.0"

## Structure Series



- Handmade in Japan
- Made of Hitachi ATS314 stainless steel, Co-developed by Hitachi Metals especially for Hairscissors (contains Molybdenum, Vanadium and Cobalt)
- Cutting Ratio 50%-60%
- Size 5.75" - 10 teeth with micro teeth
- Ergonomic Design

Available Models:

Art. Nr. 1117 YSB 1010 / Thinning-Cutter, 5.75", 10 teeth

# Konayuki 粉雪

## What makes the KONAYUKI scissors special

The Japanese Steels (from Hitachi metals)

- STEELS FOR HIGH QUALITY BLADES” Hitachi YSS steels are used. These are ATS314 and SUS 440C.

The Black Smith Technique from Sanjo History

- KONAYUKI scissors are made using forging technique. Therefore, they are very strong as Japanese traditional cutlery.

The Craftsman Skills for Finishing scissors.

- The craftsman is adjusting and making curve and twists from the hammer one by one. These are the hand craft works

## Japanese Steels

Iron-making technique of Japan is old, and is in record of the government of those days in 670.

The method of traditional iron-making technique called “Tatara”.

“Tatara” is technique which carries out oxidation-reduction of the sand iron, and makes iron ingots.

This iron ingot has very high purity.

The famous places of production of edged tools are two places, Germany and Japan in the world.

It is one of the reasons that this was able to take high-quality sand iron in Japan.

